

East Side Highway Environmental Assessment Community Working Group (CWG) Information

What is a Community Working Group (CWG)?

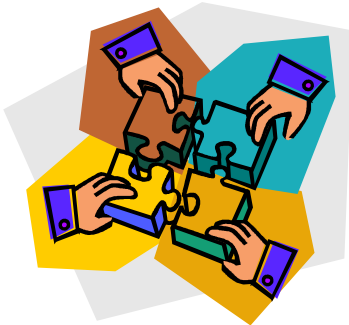
The CWG is a group of stakeholders who assist the Project Study Group (PSG) by providing input on the project. The CWG members act as representatives of the general public. The CWG is formed based on guidelines set forth in the Illinois Department of Transportation (IDOT) Context Sensitive Solution (CSS) approach to public involvement.



Who should be a CWG member?

Anyone who is a stakeholder (a person who could be affected by the project and has a stake in the outcome) can be a CWG member. The CWG will be comprised of stakeholders who represent different interest areas, such as agricultural, environmental, residents, businesses, emergency services, and schools. The CWG is limited to about 20 members, so not everyone who volunteers may serve as a member. CWG members are selected based upon the interest areas they represent – there should be evenly distributed representation from the entire Bloomington, Normal, and McLean County region from each interest area. Members of the Citizen's Advisory Group (CAG) from the Corridor Study may volunteer for the CWG. Selection of CWG members will occur in a fair and transparent manner.

Please fill out and submit the sign-in sheet to volunteer for the CWG. All entries must be received by September 8, 2010, to be considered for CWG membership. All volunteers will be notified by the Project Study Group regarding the CWG selection process.



What is the role of the CWG?

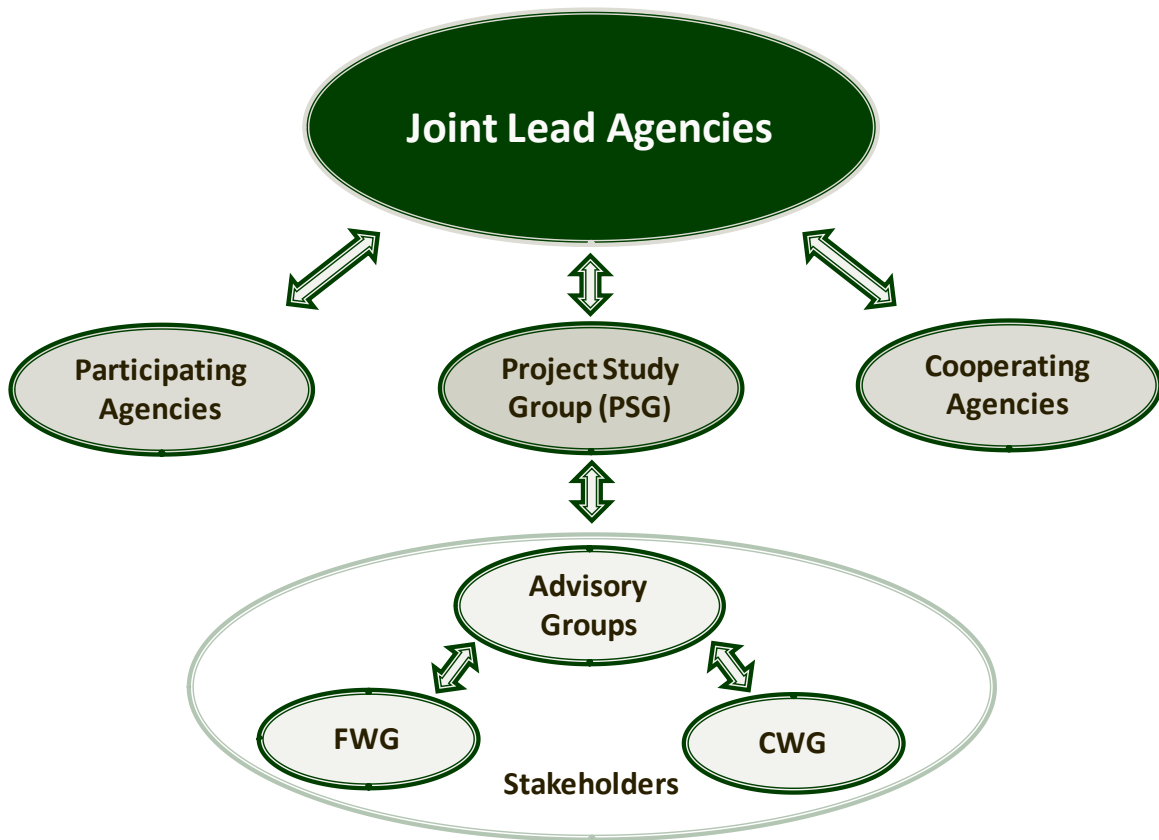
The role of the CWG is to advise the PSG. The CWG works directly with the project team throughout the project process, provides input about project objectives and alternatives, and improves the ability of the project team to understand community issues. The CWG helps the project team build a consensus among stakeholders as the project moves forward. The PSG recognizes the importance of the CWG's role in the project and values their input when making project-related decisions.

What can you expect as a CWG member?

CWG members are expected to attend and participate in meetings which will begin in fall 2010 and continue through 2013. The number and frequency of meetings will depend on which tasks the CWG is working on, but will generally be held less than once per month at the start of the study and then less frequently as the study progresses.

What about non-CWG members? How can they be involved?

You do not have to be a member of the CWG to be involved and stay informed. All stakeholders can stay involved by attending public information meetings and visiting the project website (www.eastsidehighway.com). Stakeholders can sign up for the project mailing list via the project website to receive project notifications and newsletters. In addition, a summary of what happened at each CWG meeting will be available on the project website. Focus Working Groups, or FWGs, will be formed as needed as the project progresses to work on specific issues such as sustainability, transit, environment, etc. FWG members do not have to serve on the CWG.



Responsibilities include:

- ⦿ Provide input
- ⦿ Attend CWG meetings
- ⦿ Collaborate with the PSG

Could consist of:

- ⦿ Community leaders
- ⦿ Interested stakeholders



- | | | |
|---|---|---|
| <ul style="list-style-type: none"> ⦿ Homeowner's Association ⦿ Organized Labor ⦿ Education ⦿ Trucking Firms ⦿ Airport ⦿ Historic District ⦿ Environmental Groups ⦿ Soil and Water Conservation District | <ul style="list-style-type: none"> ⦿ Law Enforcement ⦿ Emergency Services ⦿ Local Transit ⦿ Regional Transit ⦿ County Representatives ⦿ Municipal Representatives ⦿ Economic Development ⦿ Drainage Districts | <ul style="list-style-type: none"> ⦿ Bicycling Community ⦿ Park District ⦿ Farm Bureau ⦿ Manufacturing Industry ⦿ Health Care Industry ⦿ Public Works ⦿ Utility Companies ⦿ Local Businesses ⦿ Township Reps |
|---|---|---|