

*Environmental Assessment
for the*

EAST SIDE HIGHWAY
STAKEHOLDERS INVOLVEMENT PLAN
FOR
AGENCY AND PUBLIC INVOLVEMENT

***McLean County
Bloomington-Normal***

Date: May 2011

Revision 2
Revised 6/22/12

Table of Contents

Table of Contents	i
1.0 Introduction	3
1.1 <i>Project Background</i>	3
1.2 <i>Legal Requirements</i>	3
2.0 Goals and Objectives	6
3.0 Agency and Public Participation	7
3.1 <i>Joint Lead Agencies</i>	7
3.2 <i>Cooperating Agencies</i>	7
3.3 <i>Participating Agencies</i>	7
3.4 <i>Section 106 Consulting Parties</i>	8
3.5 <i>Project Study Group</i>	8
3.6 <i>Stakeholders</i>	9
4.0 Advisory Groups	9
4.1 <i>Community Working Group (CWG)</i>	9
4.2 <i>Focus Working Group (FWG)</i>	9
5.0 Ground Rules for Stakeholder Involvement	10
6.0 Project Development Activities and Stakeholder Involvement	11
6.1 <i>Develop Draft SIP</i>	11
6.2 <i>Project Initiation Letter</i>	11
6.3 <i>Cooperating and Participating Agency Invitation Letters</i>	12
6.4 <i>Agency and Stakeholder Scoping</i>	13
6.5 <i>Purpose and Need</i>	14
6.6 <i>Alternatives Analysis</i>	14
6.7 <i>Preferred Alternative</i>	15
6.8 <i>EA Preparation</i>	15
6.9 <i>Finding of No Significant Impact (FONSI)</i>	15
6.10 <i>Limitations on Claims</i>	16
7.0 Additional Methods for Involving Stakeholders	16
7.1 <i>Community Groups Briefings</i>	16
7.2 <i>Identification of Special Outreach Areas</i>	16
7.3 <i>Media Relations</i>	16
7.4 <i>Project Newsletters</i>	17
7.5 <i>Project Website Content</i>	17
7.6 <i>Frequently Asked Questions</i>	17
7.7 <i>Comment Forms</i>	17
7.8 <i>Project Informational Materials</i>	17
8.0 Modification of the SIP	18
9.0 Public Availability of the SIP	18
10.0 Agency Dispute Resolution	18
10.1 <i>Informal Dispute Resolution Process</i>	19
10.2 <i>Formal Dispute Resolution Process</i>	19

Appendix A: Project Study Area Map 20

Appendix B: List of Cooperating Agencies, Roles, and Responsibilities 21

Appendix C: List of Participating Agencies, Roles, and Responsibilities 22

Appendix D: Project Study Group 23

Appendix E: Community Working Group..... 24

Appendix F: Focus Working Groups 25

Appendix G: Revisions to the SIP..... 27

**Appendix H: Coordination Points, Information Requirements, Responsibilities,
and Timing 28**

Appendix I: Project Timeline 30

**Appendix J: Formal Dispute Resolution Process, FHWA/FTA SAFETEA-LU
Environmental Review Process Final Guidance, November 2006, page 40..... 31**

Appendix K: Stakeholder Outreach Groups 32

1.0 Introduction

1.1 Project Background

The purpose of the Stakeholder Involvement Plan (SIP) is to provide a guide for implementing a public involvement plan for the East Side Highway Environmental Assessment (EA). The project will involve the study and recommendations for a new transportation facility east of Bloomington-Normal in McLean County, Illinois. The project study area is identified as follows: 2100 North Road on the north, the 2400 East Road on the east, and US 51, I-39 and Veterans Parkway (I-55 Business) on the west. The south boundary is defined as approximately the 700 North Road east of Downs, then sloping south west to the vicinity of the 350 North Road and US 51 intersection.

A 2002 Feasibility Study examined the ability to connect I-55 to I-74 east of Bloomington-Normal, Illinois. It explored the impacts of providing a new major facility that would relieve urban traffic congestion and improve regional access.

A 2009 Corridor Study re-examined the need for a transportation facility on the east side and concluded that there was warrant for further study in more detail. The Bloomington-Normal urban area has experienced growth in the metropolitan area and this growth is expected to continue. This expansion is expected to place stress on all existing infrastructure networks; transportation, water, sewer, education, etc. A new transportation improvement is being considered to mitigate the impacts of the new and continued development on the east side. Considerable public interest was experienced during the development of the Corridor Study. The SIP will build upon the work performed and the stakeholder input received during the Corridor Study.

1.2 Legal Requirements

The process for this project will meet State and Federal requirements meant to integrate environmental values and public interaction into transportation improvements. Per Federal Highway Administration (FHWA) guidance, the East Side Highway project will adhere to the requirements set forth in the National Environmental Policy Act (NEPA), the Safe, Accountable, Flexible, Efficient Transportation Equity Act: A Legacy for Users (SAFETEA-LU), and Context Sensitive Solutions (CSS).

The FHWA, the Illinois Department of Transportation (IDOT) and McLean County acting as joint lead agencies on the East Side Highway EA, developed this SIP to meet the requirements of CSS and to address the Coordination Plan requirements of 23 USC 139(g) within the context of the NEPA process.

1.2.1 National Environmental Policy Act

The FHWA, IDOT, and McLean County will complete EA for the East Side Highway project in order to satisfy NEPA requirements. The NEPA process requires Federal

agencies to integrate environmental values into their decision making processes by considering the environmental impacts of their proposed actions and reasonable alternatives to these actions. The FHWA is the Federal agency responsible for final approval of the environmental document. This study and the supporting environmental documents will be governed by NEPA and state regulatory requirements. NEPA encourages coordination with the public and resource agencies throughout the project development process.

1.2.2 NEPA/404 Merger Process

Since the mid-1990's, Illinois has had a Statewide Implementation Agreement (SIA) in place that provides for concurrent NEPA and Section 404 (Clean Water Act) processes on Federal-aid highway projects in Illinois. The purpose of the SIA is to ensure appropriate consideration of the concerns of the Signatory Agencies as early as practical in highway project development. The Signatory Agencies are the U.S. Army Corps of Engineers (USACE), the U.S. Environmental Protection Agency (USEPA), and the U.S. Fish and Wildlife Service (USFWS) and the U.S. Coast Guard (USCG). The intent is also to involve the Illinois Environmental Protection Agency (IEPA), the Illinois Department of Agriculture (IDOA), and the Illinois Department of Natural Resources (IDNR) at key decision points early in project development to minimize the potential for unforeseen issues arising during the NEPA or Section 404 permitting processes.

All Federally funded highway projects that require an Environmental Impact Statement (EIS) or an EA, and require an Individual Permit from the USACE under Section 404 of the Clean Water Act are processed under the NEPA/404 SIA. The process requires Signatory Agency concurrence at three key decision points in the NEPA process:

- 1) Project Purpose and Need
- 2) Alternatives to be Carried Forward
- 3) Preferred Alternative

FHWA and IDOT will seek Signatory Agency input and concurrence at these key decision points in conjunction with public and agency involvement through the CSS process, at regularly scheduled formal concurrent NEPA/404 meetings.

1.2.3 Clean Water Act

The Clean Water Act (33 USC §§1251-1387) was enacted to maintain and restore the chemical, physical, and biological integrity of the waters of the U.S. Section 404 of the Clean Water Act states that it is unlawful to discharge dredged or fill material into waters of the U.S. without first receiving authorization from USACE.

As discussed previously, EIS and EA projects that require an Individual Permit under Section 404 of the Clean Water Act are processed using the NEPA/404 SIA. Both the NEPA and Section 404 processes involve the evaluation of alternatives, the assessment of impacts to resources, and the balancing of resource impacts and project need. Merging the NEPA and Section 404 permit processes expedites project decision making and avoids a duplication of work effort

The Project Study Group (PSG) will provide early and continuing opportunities for public involvement during the identification of water resources, and during the decision-making process relating to proposed water resource impacts as regulated under Section 404.

1.2.4 *Safe, Accountable, Flexible, Efficient Transportation Equity Act: A Legacy for Users*

On August 10, 2005, SAFETEA-LU was passed into law which established additional requirements for the environmental review process for FHWA and Federal Transit Administration (FTA) projects (Pub.L. 109-59, 119 Stat. 1144, Section 6002; codified as 23 USC §139). The environmental review process is defined as the project development process followed when preparing a document required under NEPA, and any other applicable Federal law for environmental permit, approval, review or study required for the transportation project.

The SAFETEA-LU requirements apply to all FHWA and FTA transportation projects processed as an EIS. The FHWA has the authority under Section 6002 to apply these requirements to individual projects that are classified as EAs. For EA projects, the decision to adhere to Section 6002 is made by the FHWA Division Office, with the concurrence of other lead agencies on a case-by-case basis. The FHWA has confirmed that the East Side Highway EA will be subject to Section 6002 requirements. 23 USC §139(g) requires the lead agencies for these projects to develop a Coordination Plan to structure public and agency participation during the environmental review process.

1.2.5 *National Historic Preservation Act*

Section 106 of the National Historic Preservation Act requires Federal agencies to take into account the effects of their undertakings on historic properties and afford the Advisory Council on Historic Preservation a reasonable opportunity to comment on such undertakings. The Section 106 process seeks to accommodate historic preservation concerns with the needs of Federal undertakings through consultation among the agency official and other parties with an interest in the effects of the undertaking on historical properties, commencing at the early stages of project planning. The goal of consultation is to identify historic properties potentially affected by the undertaking, assess its effects and seek ways to avoid, minimize or mitigate any adverse effects on historic properties. This project is considered a Federal undertaking by FHWA. This document describes coordination activities that will occur during the project development process to satisfy the Section 106 requirements.

1.2.6 *Context Sensitive Solutions (CSS)*

This project is being developed using the principles of CSS per IDOT Context Sensitive Solutions Policy and Procedural Memorandum 48-06.

“CSS is an interdisciplinary approach that seeks effective, multi-modal transportation solutions by working with stakeholders to develop, build and maintain cost-effective transportation facilities which fit into and reflect the project’s surroundings – its “context”. Through frequent communication with stakeholders, and a flexible approach to design, the resulting projects should improve safety and mobility for the traveling public, while seeking to preserve and enhance the scenic, economic, historic, and natural qualities of the settings through which they pass.”

The CSS approach will provide stakeholders with the tools and information required to effectively participate in the study process including providing an understanding of the NEPA process, transportation planning guidelines, design guidelines, and the relationship between transportation issues (needs), and project alternatives. In other words, using the CSS process should provide all project stakeholders a mechanism to share comments or concerns about transportation objectives and project alternatives, in addition to improving the ability of the project team to understand and address concerns raised. This integrated approach to problem solving and decision-making will help build community consensus and promote involvement through the study process.

As identified in IDOT’s CSS policies, stakeholder involvement is critical to project success. The CSS process strives to achieve the following:

- Understand stakeholder’s key issues and concerns.
- Involve stakeholders in the decision-making process early and often.
- Establish an understanding of the stakeholder’s role in the project.
- Address all modes of transportation.
- Set a project schedule.
- Apply flexibility in design to address stakeholder’s concerns whenever possible.

An SIP is critical to the success of CSS principles on a project. This SIP was developed to meet the requirements of CSS and to address the Coordination Plan requirements of 23 USC §139(g) within the context of the NEPA process.

2.0 Goals and Objectives

The purpose of the SIP is to provide a guide for implementing a public involvement plan for the East Side Highway EA. The SIP:

- Identifies the roles and responsibilities of the joint lead agencies.
- Identifies project stakeholders.
- Identifies the Cooperating Agencies (CAs) and Participating Agencies (PAs) to be involved in agency coordination.
- Establishes the timing and type of coordination efforts with stakeholders, CAs, PAs and the public.
- Defines the process for Project Development Activities.

The SIP, by its very nature, is a work in progress and thus subject to revision anytime events warrant.

3.0 Agency and Public Participation

3.1 Joint Lead Agencies

Per SAFETEA-LU, the joint-lead agencies for this project are FHWA, IDOT, and McLean County. As joint lead agencies, they are responsible for managing the environmental review process and preparing the environmental document for the project.

Agency Name	Role	Other Project Roles	Responsibilities
Federal Highway Administration	Lead Federal Agency	* NEPA/404 Agency * PSG	* Manage Environmental Review Process * Prepare EA * Provide opportunity for public and Participating/Cooperating Agency involvement
Illinois Department of Transportation	Joint-Lead Agency	* NEPA/404 Agency * PSG	* Manage Environmental Review Process * Prepare EA * Provide opportunity for public and Participating/Cooperating Agency involvement * Collect and prepare transportation and environmental data *Manage CSS Process
McLean County	Joint-Lead Agency	PSG	*Prepare EA * Provide opportunity for public and Participating/Cooperating Agency involvement * Collect and prepare transportation and environmental data *Manage CSS Process

3.2 Cooperating Agencies

Per NEPA, a Cooperating Agency is any Federal agency that has jurisdiction by law or special expertise with respect to any environmental impact involved in a proposed project. A State or local agency of similar qualifications or, when the effects are on lands of tribal interest, a Native American tribe, may by agreement with FHWA, IDOT, and McLean County be a Cooperating Agency. Cooperating Agencies are permitted to, by request of the lead agencies, assume responsibility for developing information and preparing environmental analyses for topics about which they have special expertise. Furthermore, they may adopt, without re-circulating, a lead agencies' NEPA document when, after an independent review of the document, they conclude that their comments and suggestions have been satisfied. See Appendix B for a list of Cooperating Agencies and their roles and responsibilities.

3.3 Participating Agencies

Per SAFETEA-LU, a Participating Agency is any Federal, state, tribal, regional, and local government agency that may have an interest in the project. By definition, all Cooperating

Agencies listed in Appendix B will also be considered Participating Agencies. However, not all Participating Agencies will serve as Cooperating Agencies. A list of Participating Agencies and their roles and responsibilities can be found in Appendix C.

3.4 Section 106 Consulting Parties

The FHWA is responsible for involving consulting parties in findings and determination made during the section 106 process. The section 106 regulations identify the following parties as having consultative role in the section 106 process:

- a) State Historic Preservation Officer (SHPO)
- b) Indian Tribes and Native Hawaiian Organizations
- c) Representatives of local governments
- d) Applicants for Federal assistance, permits, licenses and other approvals
- e) Individuals and organizations with a demonstrated interest in the undertaking

The FHWA has worked with IDOT and the SHPO to identify potential section 106 consulting parties, which are listed in the Appendix C. Individuals or organizations may request to become a consulting party for this project by contacting David Speicher by email david.speicher@illinois.gov. Consulting parties may provide input on key decision points in the section 106 process, including the project's Area of Potential Effect, determination of eligibility and finding of effect, and if applicable, consulting to avoid adverse effects to historic properties.

The FHWA and IDOT will utilize IDOT's public involvement procedures under NEPA to fulfill the Section 106 public involvement requirements.

3.5 Project Study Group

Per IDOT's CSS procedures, a PSG has been formed. The PSG is an interdisciplinary technical team, for developing the East Side Highway EA project. The PSG will make the ultimate project recommendations to the leadership of FHWA, IDOT, and McLean County. The disciplines within the PSG, which will depend on the context of the project, may include individuals and agencies that participated in the Corridor Study. The membership of the PSG is not static and will evolve as the understanding of the project's context does.

The primary objectives of the PSG include:

- Expedite the project development process.
- Identify and resolve project development issues.
- Promote partnership with stakeholders to address identified project needs.
- Work to develop consensus among stakeholders.
- Provide project recommendations to the joint lead agencies.

Based on initial project scope and its apparent context components, the persons listed in Appendix D will form the PSG for the East Side Highway EA.

3.6 Stakeholders

Per CSS procedures, a stakeholder is anyone who could be affected by the project and has a stake in its outcome. This will include property owners, business owners, State and local officials, special interest groups, and motorists who utilize the facility. The role of the stakeholders is to advise the PSG and the joint lead agencies. The PSG will consider stakeholder input when making project decisions.

4.0 Advisory Groups

Advisory groups are a subset of the stakeholders list. These groups focus on specific issues affecting specific parts of the community, such as business interests or neighborhood residents. If recommended by the stakeholders and determined necessary by the PSG, advisory groups may be formed for this project. The membership of the advisory groups may include prior participants from the Corridor Study advisory groups and new participants.

Each group will have a defined role during the study process and are essential to the CSS process. In general, the role of the advisory groups will be to provide input in addition to assisting the PSG with building overall consensus as the project moves forward. Advisory groups may include a Community Working Group (CWG) and Focus Working Groups (FWG). The hierarchy of the advisory groups as they relate to the PSG and the various agencies described in Section 3.0 is identified on the following page.

4.1 Community Working Group (CWG)

The CWG is comprised of the individual community's stakeholders identified by the PSG, as well as those individuals or groups expressing an interest in serving on the committee. Certain agencies identified as Participating Agencies will most likely be a member of one of these CWGs. CWG involvement is critical to the CSS process. The role of the CWG is to advise the PSG, which will consider CWG input when making project decisions.

The CWGs will be working committees. Typically, CWG meetings will have a workshop format. Throughout the design and planning process the CWG members will be required to participate in a number of workshop-style exercises developed to solicit input and garner consensus from the members when managing community issues; addressing design/environmental and technical issues; as well as defining proposed design alternatives. A chairperson of this group may be elected to serve as a community liaison to the PSG. The chair person would be selected by CWG consensus and would attend PSG meetings on as as-needed basis.

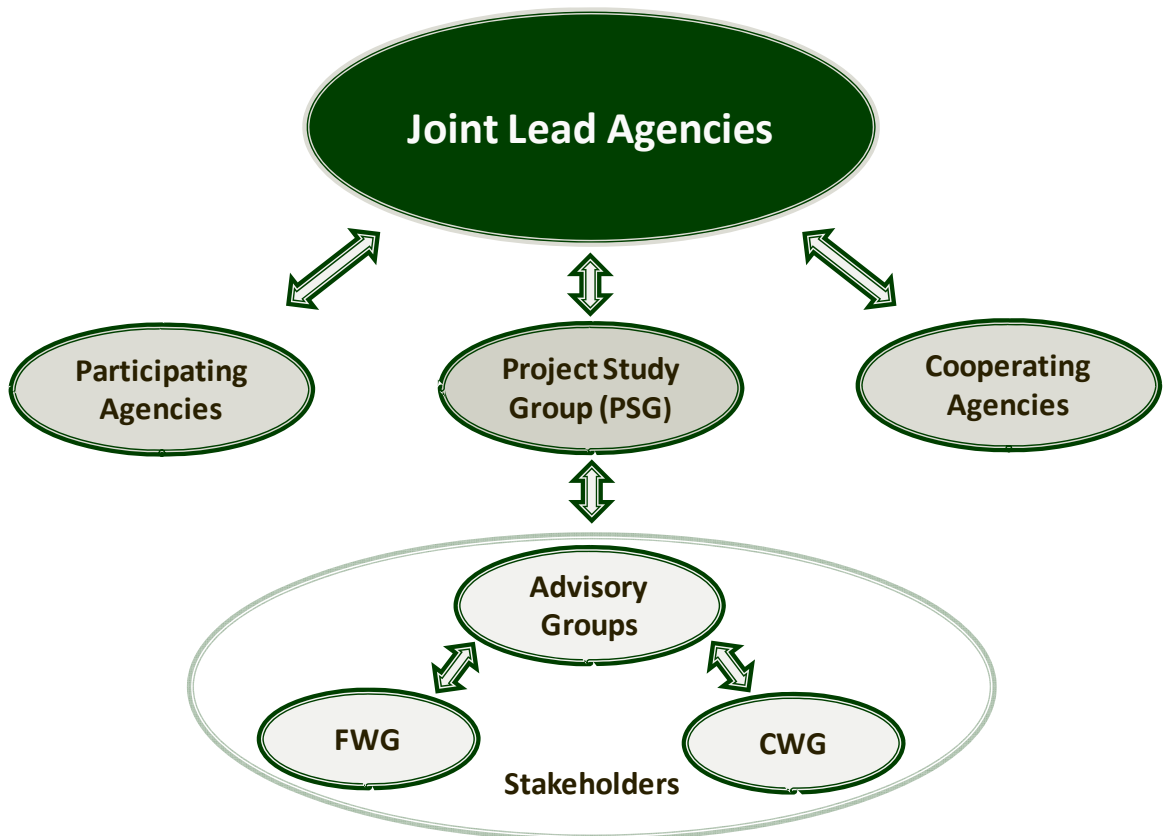
A list of CWG members will be maintained throughout this project in Appendix E of this SIP. As CWG groups are formed the table will be populated.

4.2 Focus Working Group (FWG)

The FWG is a specific and structured form of an advisory group with specific interests and knowledge, e.g., aesthetics, historical, agricultural, environmental resources, sustainability, etc. They are assembled to review specific planning and design materials and advise the PSG at key milestones, before the information is finalized. FWGs will be formed for this project as necessary. Members of the focus groups may serve on the CWG.

A Table of FWG members and their contact information will be maintained throughout this project in Appendix F of this SIP as necessary.

Figure 1: Agency/Advisory Group Hierarchy



5.0 Ground Rules for Stakeholder Involvement

All stakeholders will operate under a set of ground rules that form the basis for the respectful interaction of all parties involved in this process. The ground rule may be changed at any time based on stakeholder input. The ground rules are as follows:

- a) All input from all participants in the process is valued and considered.
- b) All participants will come to the process with an open mind and participate openly and honestly.
- c) All participants in the process will treat each other with respect and dignity.
- d) The project must progress at a reasonable pace based on the original project schedule.
- e) The role of the CWG is to advise the PSG. A consensus of CWG and FWG concurrence is sought prior to project decisions. Consensus is defined as a majority of the stakeholders in agreement with the minority agreeing that their input was duly considered. The PSG will fully consider all CWG, FWG, and stakeholder input when making project decisions. The list of CWG and FWG members is subject to change at any time as events warrant.
- f) All decisions of the joint lead agencies must be made in a clear, transparent manner and stakeholders should agree that their input was duly considered.
- g) Project milestones (Purpose & Need, Range of Alternatives) will not be altered once concurrence has been granted unless substantial new information becomes available.

6.0 *Project Development Activities and Stakeholder Involvement*

The intent of the public involvement requirements of NEPA, SAFETEA-LU, and CSS is to involve the stakeholders early and throughout the project development process. The following section details the steps that will be followed to develop the EA and the opportunities for stakeholder involvement. As of January 2011, one Public Information Meeting (PIM) was held on August 25, 2010, and the second PIM was held on January 13, 2011.

6.1 *Develop Draft SIP*

The draft SIP sets the framework for how the joint lead agencies will develop the project and how the stakeholders and the public will interact with the joint lead agencies and provide input into the project. The draft SIP identifies the list of potential stakeholders in the project, potential Cooperating and Participating Agencies, which may change as the project advances and additional stakeholders are identified. The key coordination points, including which agency is responsible for activities during that coordination point are identified in Appendix H.

6.2 *Project Initiation Letter*

The joint lead agencies have submitted the Project Initiation Letter to prepare an EA for this project.

6.3 Cooperating and Participating Agency Invitation Letters

FHWA will send invitations to Federal agencies identified as potential Cooperating or Participating Agencies, and any non-Federal agency that is identified as a potential Cooperating Agency. IDOT will send invitation letters to all State and local agencies identified as potential Participating Agencies.

IDOT and FHWA will send the letters after FHWA and IDOT agree to the draft SIP. The invitation letters will include information sufficient for the agencies to determine if they have any jurisdiction or authority, special expertise or interest related to the project.

Federal agencies invited to participate will automatically be treated as Participating Agencies unless they submit in writing by hardcopy or email to FHWA or IDOT that they:

1. Have no jurisdiction or authority with respect to the project;
2. Have no expertise or information relevant to the project; and
3. Do not intend to submit comments on the project.

Non-Federal agencies must respond to the invitation in writing by hardcopy or email within the specified timeframe (no more than 30 days) in order to be recognized as Participating Agencies. If FHWA and IDOT disagree with an invited agency declining to participate, FHWA and IDOT will attempt to resolve the disagreement through established dispute resolution procedures (see Section 10).

Agencies not initially invited to participate or that have declined an invitation to participate may become involved for several reasons listed below:

- an invited agency declines to participate, but the lead agencies think the invited agency has jurisdiction or authority over the project which will effect decision making
- an agency declines invitation, but new information indicates that the agency indeed has authority, jurisdiction, special expertise, or relevant project information
- an agency declines invitation and later wants to participate, then the agency should be invited to participate, but previous decisions will not be revisited
- an agency was unintentionally left out and now wants to participate, the agency would be invited. FHWA and IDOT will determine whether previous decisions need to be revisited

Any agency that declines to be a Participating Agency may still comment on a project through established public involvement opportunities.

It is the responsibility of Participating Agencies to provide timely input throughout the environmental review process. Failure of Participating Agencies to raise issues in a timely manner may result in these comments not receiving the same consideration as those received at the appropriate time. FHWA and IDOT will address late comments only when doing so will not substantially disrupt the process and established timelines. If a Participating Agency disagrees with the methodologies FHWA and IDOT propose, they must describe a preferred alternative methodology and explain why they prefer the alternative methodology.

6.4 Agency and Stakeholder Scoping

Scoping is a formal coordination process required by the NEPA regulations which determines the scope of issues to be addressed, and identifies the significant issues related to the proposed action. Scoping can be done by letter, phone or formal meeting. Scoping will initiate the stakeholder involvement process and involve both affected agencies and interested public. The early coordination of the scoping process melds with the principles of CSS and provides an introduction of the project to stakeholders. Agency and public scoping will be conducted concurrently.

6.4.1 Agencies

IDOT will conduct scoping activities with State and Federal Resource Agencies as follows: the project was introduced to State and Federal Environmental Resource Agencies at the September 2010 NEPA/404 merger meeting and by correspondence thereafter.

McLean County, with input from FHWA and IDOT, will be responsible for developing impact assessment methodologies to be utilized in the environmental analyses for the project. McLean County will assume primary responsibility for providing the methodologies to the Cooperating and Participating Agencies for their review and comment. FHWA, IDOT, and McLean County will consider the input of the agencies in developing the methodologies; however, the environmental review process does not require agency consensus on the methods chosen. FHWA, IDOT, and McLean County will determine the level of detail for the analysis. FHWA, IDOT, and McLean County intend this phase of the environmental review process to occur during scoping.

6.4.2 Stakeholders

The PSG will conduct scoping activities with the general public in the form of a Public Information Meeting (PIM) held in the project study area. The purpose of the first PIM, held on August 25, 2010, was to introduce the project to public stakeholders, gather any additional information on issues and concerns in the project study corridor, and present the Purpose and Need (P&N) previously drafted in the Corridor Study.

The PSG also solicited members for future involvement in the CWG. The content of the meeting re-iterated the roles of the stakeholders in the process, discussed the ground rules of participation, and provided a detailed description of the IDOT project development process. An explanation of potential environmental issues was identified and addressed during the development of the project.

As of September, 2010, the PSG is in the process of conducting scoping activities with State Legislators, Federal Legislators, City Councils, Mayors, City Managers, Economic Development Directors, Chamber of Commerce representatives, and any local, regional, statewide, or national groups with potential interest in the project as follows:

- **Scoping Meetings:** The purpose of these meetings is to share general information regarding the project and to gather input to assist in identifying and

focusing on the important issues related to the project. Scoping meetings will be conducted concurrent with kick-off meetings and initial PSG meetings.

- **Scoping Package:** In addition to meetings, a scoping package will be sent to invited agencies. The scoping package will include an introduction to stakeholders of the CSS approach, presentation of the project timeframe and SIP for their review and comment, an explanation of advisory groups that will be formed and an explanation of their roles and responsibilities. The PSG will seek suggestions on who should be members of these advisory groups.

6.5 Purpose and Need

Based on information gathered during the scoping process, the PSG will update the project P&N document developed during the Corridor Study. The PSG provided an opportunity for the Participating Agencies and the general public to provide input into the updated P&N at the first PIM during the scoping process and an opportunity to review the final P&N document at the second PIM. McLean County will send the Participating Agencies a copy of the draft P&N statement for their review and comment. The comment period will be 30 days.

The PSG will then take the input received and make any identified refinements to the P&N statement. If major changes are made to the P&N statement at this point, additional advisory group meetings may be required. If additional meetings are not required, then FHWA, IDOT, and McLean County will take the P&N to the next scheduled NEPA/404 meeting for agency concurrence. Upon obtaining concurrence from the NEPA/404 merger agencies, the P&N will be considered finalized for inclusion in the EA. Ultimately, FHWA is responsible for the final decision on the P&N.

6.6 Alternatives Analysis

Following concurrence on the P&N, the PSG will work with the advisory groups to develop the reasonable range of alternatives. This would include the need to incorporate multi-modal transportation solutions. An opportunity for the Participating Agencies and the general public to provide input into the Alternatives to be Carried Forward will be provided. A PIM will be held to share the results of technical studies and the input received from the advisory groups. McLean County will provide Participating Agencies a copy of the draft Alternatives to be Carried Forward for their review and comment. The comment period will be 30 days.

The PSG will take the input received from these efforts and make any additional refinements to the Alternatives to be Carried Forward. If major changes are made to the Alternatives to be Carried Forward, additional advisory group meetings may be required. If additional meetings are not required, the joint lead agencies and the FHWA will take the Alternatives to be Carried Forward to the next scheduled NEPA/404 merger meeting. Upon obtaining concurrence from the NEPA/404 merger agencies, the alternatives to be carried forward will be considered finalized for inclusion in the EA. FHWA, IDOT, and McLean County will consider input of the public and the agencies; however, the environmental review process does not require agency and public consensus on the

range of alternatives chosen. Ultimately, FHWA is responsible for the final decision on the Alternatives to be Carried Forward.

6.7 Preferred Alternative

Input from stakeholders will be considered by FHWA, IDOT, and McLean County to make a decision on the selection of the Preferred Alternative and preliminary mitigation measures. The PSG will present the Preferred Alternative to the advisory groups to obtain consensus. The selection of the Preferred Alternative and preliminary mitigation measures will be presented at public meetings. The final Preferred Alternative will be reached by consensus from the PSG, considering input from stakeholders.

The PSG will then take the input received at these meetings and make any further needed refinements to the Preferred Alternative. If major changes are recommended to the Preferred Alternative, additional advisory group meetings may be required. If additional meetings are not required, FHWA, IDOT, and McLean County will take the Preferred Alternative to the next scheduled NEPA/404 meeting for agency concurrence on the Preferred Alternative. Upon obtaining concurrence from the NEPA/404 merger agencies, the Preferred Alternative will be considered finalized for inclusion in the EA. Ultimately FHWA and IDOT will consider public and agency input in selecting the Preferred Alternative; however, the environmental review process does not require agency consensus on the Preferred Alternative.

6.8 EA Preparation

McLean County and IDOT will prepare the EA in cooperation with FHWA. The Preferred Alternative will be identified in the EA. Approval of the EA lies solely with FHWA. IDOT will be responsible for circulating the EA for the 30-day waiting period. No sooner than fifteen (15) days after FHWA approves the EA, McLean County will hold a Public Hearing which will be advertised in local newspapers and on the project website. Any comments received during the waiting period will be answered by letter.

6.9 Finding of No Significant Impact (FONSI)

If it is determined that the Preferred Alternative will result in no significant impacts to the environment, a FONSI will be prepared to conclude the process and document the decision. The FONSI document is a statement describing the reasons for determining there are no significant impacts, and includes the EA, modified to reflect all applicable comments and responses, by reference. No formal public circulation of the FONSI is required, but the state clearinghouse must be notified of the availability of the FONSI. In addition, FHWA recommends that the public be notified through notices in local newspapers. If the FHWA makes a determination at any time during the project that environmental resource impacts are significant and the preparation of an EIS is required, a FONSI will not be issued.

6.10 Limitations on Claims

SAFETEA-LU Section 6002 includes a provision limiting the time period to 180 days on claims against Federal agencies for certain environmental and other approval actions, provided this Statute of Limitations (SOL) notification is published in the Federal Register. The SOL applies to a permit, license, or a specified approval action such as an action related to a transportation project. See PART A on page 44 of the FHWA/FTA SAFETEA-LU Environmental Review Process Final Guidance (November 2006) for the FHWA Process for Implementing the Statute of Limitations. The *SAFETEA-LU Environmental Review Process Final Guidance* (November 2006) is available on the FHWA website at www.environment.fhwa.dot.gov/strmlng/es2safetealu.asp#sec_6002. IDOT intends to publish this 180 day SOL notice for the East Side Highway EA.

7.0 Additional Methods for Involving Stakeholders

In addition to the input opportunities identified above, other opportunities will be afforded to stakeholders and the public throughout the development of the EA. Those additional opportunities may include, but are not limited to the following activities:

7.1 Community Groups Briefings

Presentations to community/civic groups, business groups, or other interested groups or organizations over the course of the EA process will be used as an opportunity to introduce the project, provide project updates, and receive public input on the project. Those meetings may include presentations to the local Farm Bureau, the local Rotary, Kiwanis, or Lions Club, church groups, or town councils. Groups will be encouraged to attend public meetings and provide written comments.

7.2 Identification of Special Outreach Areas

Constituents requiring special outreach to ensure they have access to information and the opportunity to make comments, regardless of their race, religion, age, income or disability, will be identified in the project area. Identification of these populations will include using census data or information obtained from groups or organizations known to have knowledge of these populations.

7.3 Media Relations

Local newspapers, radio and television stations will be identified for use in disseminating information about the project. Notices and reminders of project meetings will be sent to these media outlets in advance of public meetings. PSG members may appear on public broadcasting outlets such City Vision or make themselves available for radio or newspaper interviews on WJBC or with the Pantagraph, respectively, to generate public interest in the project.

7.4 Project Newsletters

Project newsletters will be prepared to keep the project area residents, business and property owners, interested citizens, civic groups, schools, local agency officials, and local public officials, and all stakeholders informed of the status of the project. Newsletters will be published at appropriate project milestones.

7.5 Project Website Content

The website for the project will be maintained throughout the duration of the project as a means of transmitting information and gathering input. The website will be updated with newsletters, public meeting announcements and transcripts, and other project information as needed. The public will be able to download presentation exhibits and project maps. Other web-tools to be used will include a public comment service for collecting comments online through the project website. For continuity, the project website address will remain the same as the Corridor Study Website: www.eastsidehighway.com.

7.6 Frequently Asked Questions

To provide direct answers to some of the most Frequently Asked Questions (FAQs) posed by the public, FAQ sheets will be prepared and will be distributed via the project website and hardcopies will be available at briefings, public meetings and other public involvement events. These questions/answers will be updated as new information becomes available and based upon stakeholder comments, inquiry, and input.

7.7 Comment Forms

Comment forms will be provided at all public meetings and smaller group meetings to encourage participants to provide their comments on the project. An electronic comment form will also be available on the project website, providing visitors the opportunity to send comments to the project team.

Comments may be provided in writing or electronically. Comments will be accepted at any time during the EA process. All comments will be reviewed and incorporated as appropriate.

7.8 Project Informational Materials

An information packet will be prepared early in the study process to provide an overview of the ESH study and the EA process. The information will cover the entire general EA process so that it may be used throughout the length of the project. The packet will be in a reader-friendly-format, incorporate graphics, and avoid excessive use of technical terms.

A fact sheet will be prepared to provide ESH study information, address misperceptions about the study, and list Frequently Asked Questions. The fact sheet will be in a reader

friendly format and avoid use of excessive technical terms. The fact sheet may be updated or new versions may be produced as the project proceeds.

The information packet and fact sheet will be distributed to key target stakeholders as listed in Appendix K. The stakeholder list will be maintained and updated throughout the duration of the project. Contacts on the list may be notified of upcoming meetings via mail or email.

8.0 *Modification of the SIP*

FHWA, IDOT, and McLean County will provide updated versions of the SIP to all stakeholders, as necessary. Agency contact information may require updating as staffing changes over time. FHWA and IDOT ask that Cooperating and Participating Agencies provide notification if staffing and contact information changes.

FHWA, IDOT, and McLean County will develop the timeline to be included in Appendix I of the SIP. Formal agency concurrence in the schedule is not required. Only the FHWA, IDOT, and McLean County may modify the established periods identified in the SIP. They may lengthen the established periods only for good cause and must document the reasons for the lengthening in the administrative record. FHWA, IDOT, and McLean County may only shorten the established review periods in the SIP with the concurrence of affected Participating and Cooperating Agencies. IDOT will document the Cooperating and Participating Agency concurrence in the administrative record.

IDOT will maintain a record of modifications to the SIP. FHWA, IDOT, and McLean County will make this record available to all involved agencies and the public upon request.

9.0 *Public Availability of the SIP*

IDOT will make the current SIP available to the public at project meetings and on the project website. Availability and notification will follow the public involvement procedures established in the Context Sensitive Solutions Policy for Illinois and the Public Involvement Guidelines in the IDOT Bureau of Design and Environment Manual (Chapter 19) available on the IDOT website at www.dot.state.il.us/desenv/bdmanual.html.

10.0 *Agency Dispute Resolution*

FHWA, IDOT, and McLean County are committed to working with all agencies in the environmental review process to identify project issues early and seek consensus on disagreements.

This section describes the overall project dispute resolution process that will be used by FHWA, IDOT, and McLean County as part of the project stakeholder involvement program. Additionally, FHWA, IDOT, and McLean County will follow the existing dispute

resolution process outlined as part of the NEPA/404 Merger agreement for resolving issues with Signatory Agencies.

FHWA, IDOT, and McLean County are committed to building stakeholder consensus for project decisions. However, if an impasse has been encountered after making good-faith efforts to address unresolved concerns, FHWA, IDOT, and McLean County may proceed to the next stage of project development without reaching consensus. FHWA, IDOT, and McLean County will notify agencies of their decision and a proposed course of action. FHWA, IDOT, and McLean County may propose using an informal or formal dispute resolution process as described below.

10.1 Informal Dispute Resolution Process

In the case of an unresolved dispute between the agencies, FHWA, IDOT, and McLean County will notify all agencies of their decision and proposed course of action. The decision to move an action forward without consensus does not eliminate an agency's statutory or regulatory authorities, or their right to elevate the dispute through established agency dispute resolution procedures. FHWA, IDOT, and McLean County recognize and accept the risk of proceeding on an action without receiving a Signatory Agency's concurrence and will work with any agency to attempt to resolve a dispute.

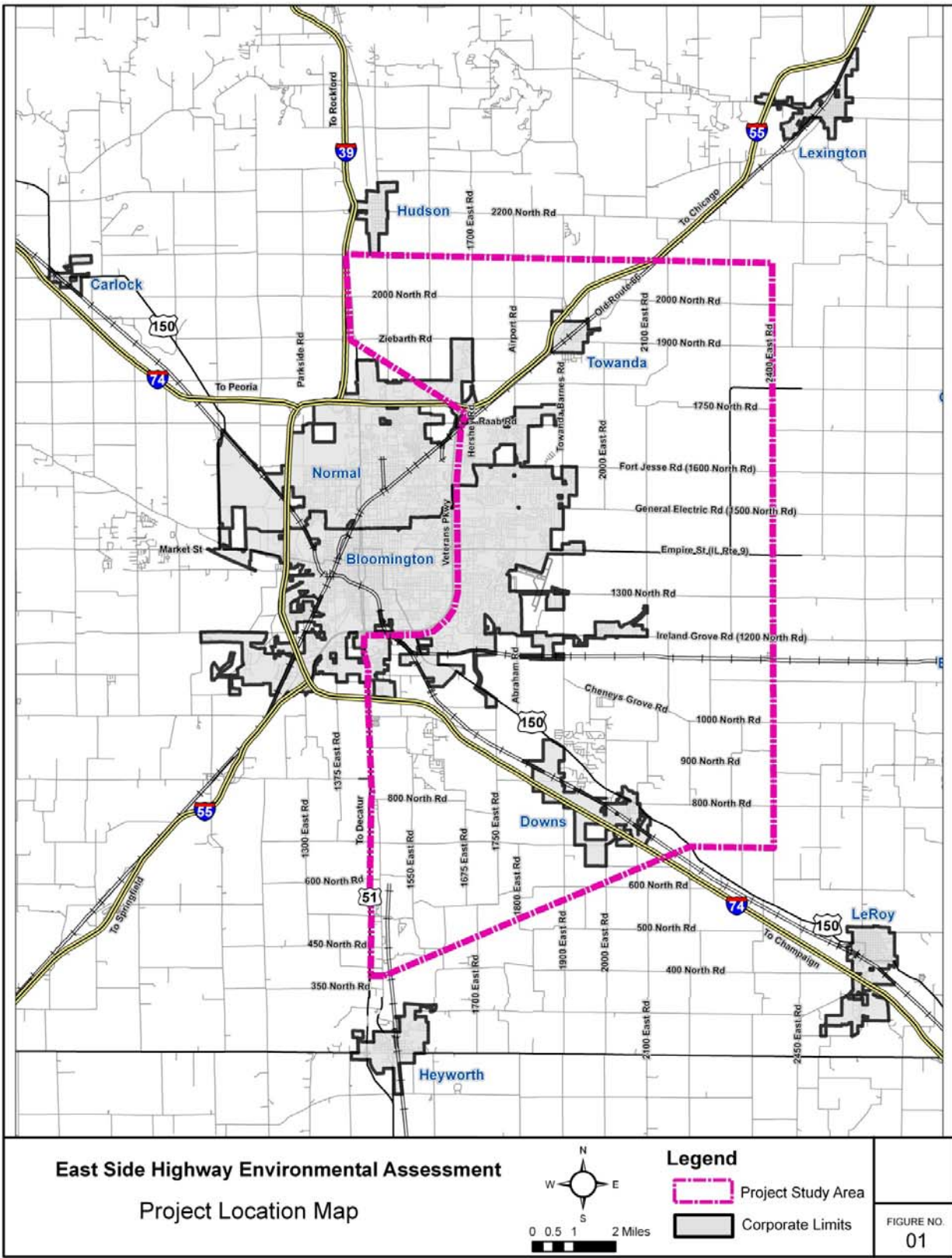
10.2 Formal Dispute Resolution Process

23 USC §139(h) established a formal dispute resolution procedure for the environmental review process. This process is only intended for use on disputes that may delay a project or result in the denial of a required approval or permit for a project. Only the project sponsors or the Illinois State Governor may initiate this formal process; they are encouraged to exhaust all other measures to achieve resolution prior to initiating this process.

Appendix J contains a copy of a diagram illustrating the formal dispute resolution process included in the FHWA/FTA *SAFETEA-LU Environmental Review Process Final Guidance* (November 2006) and available on the FHWA website at www.environment.fhwa.dot.gov/strmlng/es2safetealu.asp#sec_6002.

(Flow chart for schedule of involvement activities to be added later.)

Appendix A: Project Study Area Map



**East Side Highway EA
Stakeholder Involvement Plan**

Appendix B: List of Cooperating Agencies, Roles, and Responsibilities

The stakeholders include the co-lead(s), Cooperating, and Participating Agencies that have agreed to take part in the development of the proposed project and whose contact information is listed in Appendices B and C. The Contact Person is the agency representative that is responsible for attending project meetings and reviewing environmental documents.

Agency Name	Requested Role	Response	Other Roles	Responsibilities	Contact
U.S. Environmental Protection Agency	Cooperating Agency		NEPA/404 Signatory	Section 404 permit jurisdiction; environmental reviews; wetlands. Provide comments on purpose and need, methodologies, range of alternatives, & preferred alternative	Kenneth Westlake
Illinois Department of Natural Resources	Cooperating Agency		None	Fish & wildlife resources; endangered & threatened species; natural areas & nature preserves; wetlands; prairies; forests. Provide comments on purpose and need, methodologies, range of alternatives & preferred alternative	Steve Hamer
U.S. Army Corps of Engineers	Cooperating Agency		NEPA/404 Signatory		
U.S. Fish & Wildlife Service	Cooperating Agency		NEPA/404 Signatory		
Illinois Department of Agriculture	Cooperating Agency		None		
Illinois Environmental Protection Agency	Cooperating Agency		None		
Illinois Historic Preservation Agency	Cooperating Agency		None		
Section 106	Cooperating Agency		None		

**East Side Highway EA
Stakeholder Involvement Plan**

Appendix C: List of Participating Agencies, Roles, and Responsibilities

Agency Name	Requested Role	Response	Other Project Roles	Responsibilities	Contact
Federal Agencies					
Natural Resources Conservation Service	Participating Agency				
Advisory Council on Historic Preservation	Participating Agency				
Federal Aeronautics Administration/ Illinois Division of Aeronautics	Participating Agency				
Local/County Agencies					
City of Bloomington	Participating Agency				
Bloomington-Normal Public Transit System	Participating Agency				
Town of Normal	Participating Agency				
Village of Towanda	Participating Agency				
Village of Downs	Participating Agency				
Townships	Participating Agency				
Hudson Township	Participating Agency				
Money Creek Township	Participating Agency				
Normal Township	Participating Agency				
Towanda Township	Participating Agency				
Bloomington Township	Participating Agency				
Bloomington Township Fire District	Participating Agency				
Bloomington Township Public Water Distribution	Participating Agency				
Old Town Township	Participating Agency				
Randolph Township	Participating Agency				
Randolph Township Fire District	Participating Agency				
Downs Township	Participating Agency				

Appendix D: Project Study Group

Agency Name	Contact Person/Title
Federal Highway Administration	Heidi Liske
McLean County	Eric Schmitt
City of Bloomington	James Karch
Town of Normal	Gene Brown
McLean County Regional Planning Commission	Paul Russell
Illinois Department of Transportation – District 5	Darla Latham
Clark Dietz, Inc.	Jerry Payonk Project Manager
HDR Engineering	John Lazzara Environmental Assessment
Huff & Huff Engineering	Linda Huff Environmental Lead

Appendix E: Community Working Group

Name	Interest Area
Mark Hines	Agriculture
Frank Wieting	Agriculture
Jerry Erb	Bicyclists
Andy Shirk	Business
Dave Rasmussen	Business
Charlie Moore	Economic Development
Ken Springer	Economic Development
Gary Niehaus	Education
Curt Simonson	Education
Sarah Franks	Emergency Services
Angelo Capparella	Environmental
Nancy Armstrong	Environmental
Charles L. Rohrbaugh	Environmental
Terry Giannoni	Government
Carol Reitan	Homeowner/Resident
Arthur Eiff	Homeowner/Resident
Bruce Naffziger	Homeowner/Resident
Melvyn Jeter	Homeowner/Resident
Eric Penn	Labor
Mike Matejka	Labor
Rusty Thomas	Law Enforcement
Robert Wall	Law Enforcement
John Kennedy	Parks
Mike Steffa	Parks
Kent Bohnhoff	Soil & Water Conservation District
Carl Olsen	Transportation
Bernie Anderson	Utilities
Tim Muellenberg	Utilities

Appendix F: Focus Working Groups

Land Use and Access Management FWG	
Name	Affiliation
William Brummel	Homeowner/Resident
Guy DiCiaula	Bloomington Normal Area Home Builders
Terry Giannoni	Government - Money Creek Township
Curtis Hawk	McLean County Emergency Management Agency
Mike Humer	Normal Fire Department
John Kennedy	Homeowner/Resident
Charlie Moore	McLean County Chamber of Commerce
Jeanette Otis	Homeowner/Resident
James Pearson	Homeowner/Resident
Dave Rasmussen	State Farm
Larry Reeser	Homeowner/Resident
Randy Shaalb	Homeowner/Resident
Mike Swartz	McLean County Farm Bureau
Rusty Thomas	Sherriff Department
Jeff Trimble	Homeowner/Resident
Robert Wall	Bloomington Police Department
Frank Weiting	Homeowner/Resident

Sustainability FWG	
Name	Affiliation
Joan Brehm	ISU
Aaron Carr	Homeowner/Resident
Angelo Capparella	ISU, Friends of Kickapoo Creek, JWP Audubon
Tom Haynes	ISU
Jan Holder	Friends of Kickapoo Creek
John Kennedy	City of Bloomington
David Lamb	City of Bloomington
Missy Nergard	ISU
Dale Strain	Homeowner/Resident
Robin Weaver	Town of Normal

**East Side Highway EA
Stakeholder Involvement Plan**

Alternative Modes FWG	
Name	Affiliation
Dan Anderson	McLean County Wheelers
Christine Brown	Homeowner/Resident
Mercy Davison	Town of Normal
Laura Dick	SHOWBUS
Scott Douglas	Homeowner/Resident
Jerry Erb	League of Illinois Bicyclists
Mike James	Village of Downs
Andrew Johnson	BNPTS
Diane Quijano	Homeowner/Resident
Mike Steffa	McLean County Parks
Bob Williams	Homeowner/Resident

Appendix G: Revisions to the SIP

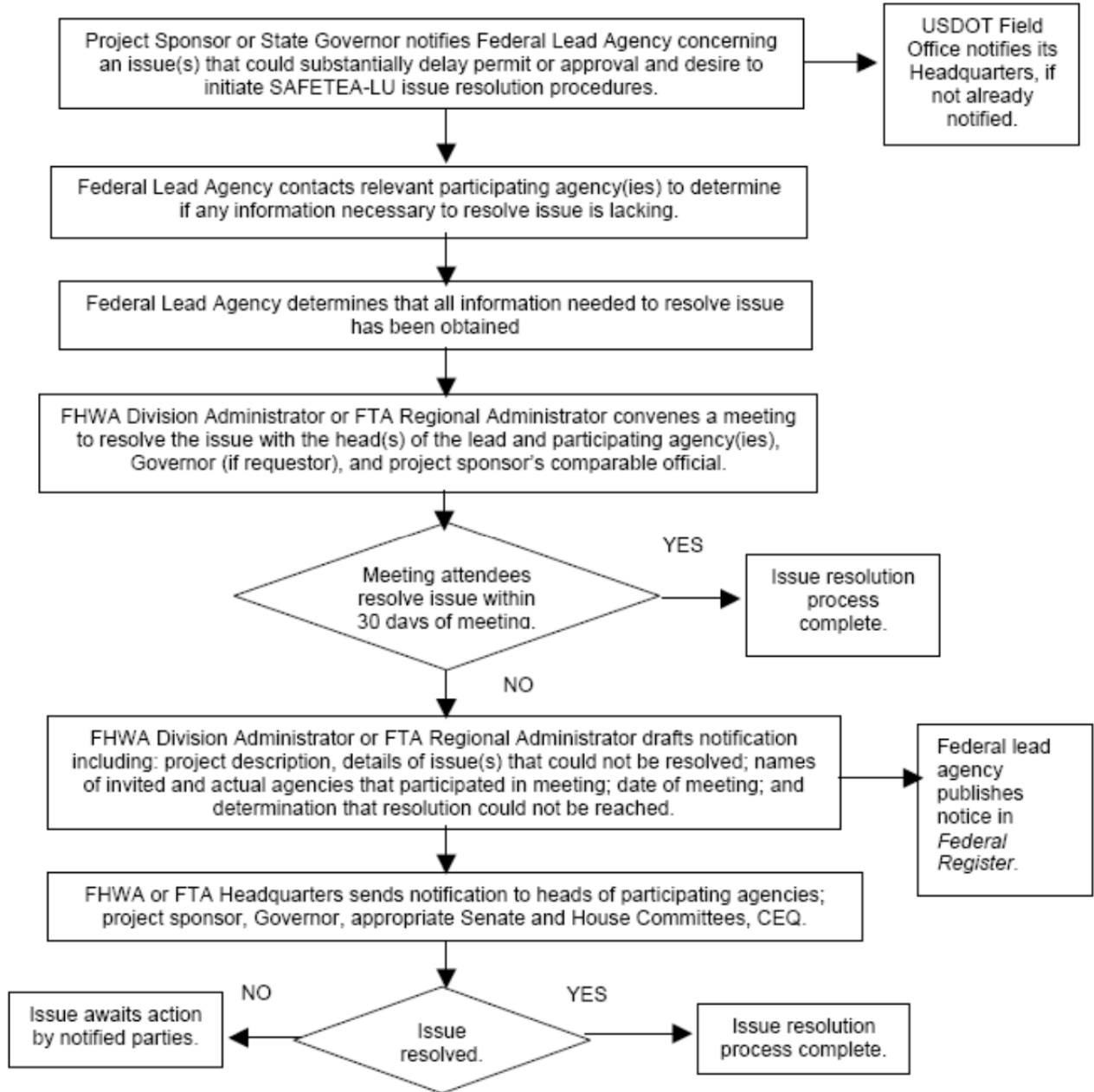
Version	Date	Revision Description
1	5/11/11	Updated Appendix E
2	5/2/12	Added stakeholder ground rule g to Section 5.0. Updated Section 7.1, 7.6, and 7.7 and added Section 7.8 Updated Appendix F Added Appendix K

Appendix H: Coordination Points, Information Requirements, Responsibilities, and Timing

Coordination Point	Requirement			Action	Agency Responsible		Remarks	
	§6002	NEPA	CSS		IDOT/County	FHWA		
1. Project Initiation Activities								
1.0	Project Initiation	●	●		Send project initiation letter to FHWA Division Administrator	●	●	This is the first step in the entire process. IDOT submits this letter to FHWA prior to performing any work on the project.
1.1	Formation of Project Study Group			●	Identify members of the PSG	●		PSG is formed prior to any other work being completed on the project. The PSG is an interdisciplinary technical team. The PSG will make project recommendation to the leaders of IDOT and FHWA.
1.2	Establish Timeframe Agreement	●			Develop specific timeframe for this project	●	●	A Timeframe will be established and agreed to by FHWA and IDOT.
1.3	Identify Stakeholders, Participating Agencies (PAs) and Cooperating Agencies CAs, and Develop Stakeholder Involvement Plan (SIP)	●		●	PSG identifies preliminary stakeholders list, PAs and CAs to receive invitations, and then develops the SIP that includes all items required to be part of a Coordination Plan by 6002	●		FHWA and IDOT, as joint lead agencies, must agree upon the content of the SIP before it is released externally. Specific information that will be included in the SIP include: scoping activities, Development of the P&N, identification of the range of alternatives, collaboration on methodologies, , identification of the preferred alternative, completion of the EA, FONSI, and other permits or approvals.
2. Agency and Public Coordination								
2.0	Invite Cooperating and Participating Agencies (CA's and PA's)	●			Send invitation letters to PAs and CAs.	●	●	IDOT invites all state PAs and CAs. FHWA invites Federal PAs and CAs and Tribes with an interest in the project area. Environmental Resource Agencies (ERAs) that are not CAs will most likely be PAs.
2.1a	Agency Scoping			●	Invite and hold introductory meetings with identified agency stakeholders.	●		The purpose of these meetings is to share information regarding the project status and next steps and to gather input. Meetings may be held with State Legislators, Federal Legislators, City Councils, Mayors, City Managers, Economic Development Directors, Chamber of Commerce representatives, State and Federal Resource Agencies and any local, regional, statewide, or national groups with potential interest in the project.
2.1b		●	●	●	Prepare scoping materials. Send Scoping Package.	●		A Scoping package will be sent to the invited CA's and PA's for their review. The scoping package will include an introduction to stakeholders of the CSS approach, presentation of the project timeframe and SIP for their review and comment, an explanation of advisory groups that will be formed and an explanation of their roles and responsibilities and draft Methodologies for environmental resource evaluation.
2.1c		●	●		Invite ERAs to participated in Agency Scoping	●	●	This task will gather information and input from the ERAs. In addition to typical environmental scoping activities, this meeting will explain the CSS process, present the agreed to timeframe and SIP for input, explain the advisory groups, their roles and responsibilities (CWG, FWG, NEPA/404,...) and the ERAs' roles and responsibilities in these groups, and how the ERAs will be involved throughout this process. IDOT will provide proposed methods on environmental surveys & analyses and solicit agency input on these methods. This scoping may be done by correspondence after the project introduction.
2.2	Public Scoping	●		●	Invite public to Public Scoping/Information Meeting; hold Public Scoping/Information Meeting	●		This meeting will be an introduction to public stakeholders and will gather scoping input from the general public. In addition, the timeframe and SIP would be presented for review and comment, CSS would be explained, formation of advisory groups (CWG, FWG) and the public's roles and responsibilities. Volunteers to serve on the advisory groups will be solicited at this meeting. This meeting will be held in three geographical areas in the project corridor.
2.3	Formation of Stakeholder Groups			●	PSG identifies members of Stakeholder Groups			Volunteers from the Public Information meetings will be contacted to confirm their interest in serving on an advisory group. Other stakeholders including but not limited to emergency services, transit, schools, agricultural, business will also be contacted by the PSG to serve on advisory groups (CWG, FWG).
3. Purpose and Need Development								
3.1	PSG Meeting			●	Convene PSG Meeting; Consultant prepares: overview of updated P&N which was developed with stakeholder input during the Corridor Study.	●		The following will occur at this meeting: 1) Consultant prepare and present a draft updated P&N; 2) Refine and reach PSG consensus on P&N in preparation for presenting to public, PAs and CAs (this may involve multiple versions of the P&N and review outside of this meeting; and 3) Discuss next Public Meeting. This task may require one or more meetings of the PSG.
3.2	Stakeholder Briefing and Public Information Meeting	●	●	●	Provide opportunity for the general public, PAs and CAs to be involved in the development of the P&N	●		At this meeting, the draft project P&N will be presented for input. The information that will be presented at this meeting will also be sent to the PAs and CAs asking for their input as well. This meeting will serve as meeting the SAFETEA-LU 6002 requirements that PAs and the public have an opportunity to provide input into the P&N prior to final decisions on P&N.
3.3	PSG Meeting			●	Convene PSG Meeting; prepare overview of Public Meeting; summarize of comments on P&N; revise P&N per comments.	●		The following will occur at this meeting: 1) EAST SIDE HIGHWAY Partners presents an overview of Public Meeting; 2) Make any necessary refinements to the P&N per input from Public Meeting (if there a major changes to the P&N, take back to the CWG prior to finalizing); and 3) Seek FHWA approval to proceed with NEPA/404 meeting on P&N.

3.4	NEPA/404 Concurrence Point Meeting		●	Obtain a spot on the agenda at one of the scheduled NEPA/404 meetings; provide FHWA approved P&N Package 30 days prior to meeting	●	●	Obtain Signatory Agency concurrence on Concurrence Point #1 - P&N.	
4. Development of Range of Alternatives and Alternatives to be carried forward								
4.0	CWG Meetings			●	Convene CWG	●	The following will be covered at this meeting: 1) present developed alternatives; 2) Seek CWG input on these alternatives and ideas on additional alternatives; 3) reach CWG consensus on alternatives to be considered. FWG may be formed to add further input on specific issues.	
4.1	PSG Meeting			●	Convene PSG Meeting	●	The following will occur at this meeting: 1) Discuss advisory group alternatives in terms of engineering and environmental issues; and 2) Develop PSG suggested alternatives to carry forward.	
4.2	CWG Meeting			●	Convene CWG	●	The following will be covered at this meeting: 1) present PSG developed alternatives to be carried forward; 2) Reach CWG consensus on alternatives to be carried forward.	
4.3	Stakeholder Briefing and Public Meeting	●	●	●	Provide PAs, CAs and the public with information regarding alternatives being considered; identify resources located within project area, general location of alternatives, and potential impacts; reasons for eliminating some alternatives and keeping others; solicit comments; hold public meeting	●	At this meeting, all alternatives considered and alternatives that were carried forward for further consideration will be presented for input. The information that will be presented at this meeting will also be sent to the PAs and CAs asking for their input as well. This meeting will serve as meeting the SAFETEA-LU 6002 requirements that PAs and the public have an opportunity to provide input into the alternatives being considered prior to final decisions being made. If, as a result of this meeting, additional alternatives would need consideration or if there are major changes to the alternatives already being consider, subsequent PSG, and advisory group meetings will be required.	
4.4	PSG Meeting			●	Convene PSG Meeting	●	The following will occur at this meeting: 1) Discuss alternatives to be carried forward in terms of engineering and environmental issues; and 2) Get FHWA approval to take to NEPA/404 meeting.	
4.5	NEPA/404 Concurrence Point Meeting		●		Obtain a spot on the agenda at one of the scheduled NEPA/404 meetings.	●	●	Obtain Signatory Agency concurrence on alternatives to be carried forward.
5. Preferred Alternative Development								
5.1	CWG Meeting			●	Convene CWG	●		The following will be covered at this meeting: develop and reach CWG consensus on Preferred Alternative.
5.2	Stakeholder Briefing and Public Meeting	●		●	Provide PAs, CAs and the public with information regarding alternatives being evaluated; identify resources located within general location of alternatives and potential impacts; reasons for eliminating alternatives and choosing the Preferred Alternative; solicit comments; hold public meeting	●		At this meeting, all alternatives considered, alternatives that were carried forward for further consideration, and the Preferred Alternative will be presented for input. The information that will be presented at this meeting will also be sent to the PAs and CAs asking for their input as well. If, as a result of this meeting, additional alternatives would need consideration or if there are major changes to the Preferred Alternative, subsequent advisory group meetings will be required.
5.3	PSG Meeting			●	Convene PSG Meeting	●		The following will occur at this meeting: 1) Get FHWA OK to take Preferred Alternative to NEPA/404 meeting.
5.4	NEPA/404 Concurrence Point Meeting		●		Obtain a spot on the agenda at one of the scheduled NEPA/404 meetings. Present rationale for Preferred Alternative to and solicit input from NEPA/404 Signatory Agencies.	●	●	Obtain Signatory Agency concurrence on Preferred Alternative.
5.5	Development of the EA			●	Develop EA document	●	●	During this time, the EA will be developed by EAST SIDE HIGHWAY Partners. FHWA and IDOT will review this document and refine it to a point it is ready to be circulated to the CAs.
5.6	Circulation of EA	●		●	Send EA to all agencies and appropriate legal counsel; make EA available for public review; county makes the EA available to the public and holds a Public Hearing.	●	●	Once Legal Counsel provides legal sufficiency finding, the EA is ready for FHWA signature.
5.7	Issue FONSI	●	●		County provides FONSI to FHWA for review and signature.		●	
5.8	Completion of Permits, Licenses or Approvals after FONSI				Issue applicable permits, licenses or approvals			Jurisdictional/ permitting agencies

Appendix J: Formal Dispute Resolution Process, FHWA/FTA SAFETEA-LU Environmental Review Process Final Guidance, November 2006, page 40.



The SAFETEA-LU issue resolution process

Note that where two steps are not separated by a “yes” or “no” decision diamond, both steps must be taken.

Appendix K: Stakeholder Outreach Groups

GROUP A				
Organization	Contact	Title	Address	Phone/Email
Local Government				
Bloomington	Steve Stockton	Mayor	109 E. Olive Street, Bloomington, IL 61701	(309)434-2210
Normal	Chris Koos	Mayor	100 E. Phoenix Avenue, P.O. Box 589, Normal, IL 61761	(309)454-9503
Towanda	Doug Porter	Acting Mayor	P.O. Box 213, Towanda, IL 61776	(309)728-2742
Downs	Ryan McLaughlin	Mayor	P.O. Box 18 Downs, IL 61736	(309)378-3221
McLean County Board	Matt Sorensen	Chairman	8270 Idlewood Drive, Bloomington, IL 61704	(309)378-2000
	Diane Bostic	Vice Chairperson	907 N. Mitsubishi Motorway, Normal, IL 61761	
	Stan Hoselton	Transportation Committee Chairman	111 Melissa Drive, Lexington, IL 61753	
	Don Cavallini	Transportation Committee Vice Chairman	107 Northview Drive, Lexington, IL 61753	
McLean County Regional Planning Commission	Carl Teichman	Chairman	Government Center M#103 115 East Washington Street Bloomington, IL 61701	
	George Benjamin	Vice Chairman	Government Center M#103 115 East Washington Street Bloomington, IL 61701	
Bloomington Planning & Zoning	Stan Cain	Chairman	P.O. Box 3157, Bloomington IL 61702	(309)434-2503
Normal Planning Commission	Rick Boser	Chairperson	100 E. Phoenix Avenue, Normal, IL 61761	(309)454-9590
Downs Township	Tony Wheet	Trustee	Downs Township Building 103 Shafer Drive Downs, IL 61736	
US and State Government				
US Senate	Senator Mark Kirk	US Senator for Illinois	230 S. Dearborn St. Suite 3900, Chicago IL 60604	(312)886-2117
US Senate	Senator Dick Durbin	US Senator for Illinois	230 S. Dearborn St. Suite 3892, Chicago IL 60604	(312)353-4952
Congress	Adam Kinzinger	Congressman - District 11	2701 Black Road, Suite 201, Joliet IL 61453	(815)729-2308
Congress	Tim Johnson	Congressman – District 15	2004 Fox Drive, Champaign, IL 61820	(217)403-4690
Illinois Senate	Bill Brady	State Senator - District 44	2203 Eastland Drive, Suite 3, Bloomington, IL 61704	(309)644-4440
Illinois Senate	Shane Cultra	State Senator – District 53	104 W. Lincoln Ave., Onarga, IL 60955	(815)268-4090
Illinois House	Dan Brady	State Representative – District 88	202 N. Prospect, Bloomington, IL 61704	(309)622-1100
Illinois House	Keith Sommer	State Representative – District 106	121 W. Jefferson, Morton, IL 61550	(309)263-9242

**East Side Highway EA
Stakeholder Involvement Plan**

GROUP B				
Organization	Contact	Title	Address	Phone/Email
Economic				
McLean County Chamber of Commerce	Bob Dobski	Chairman	210 S. East Street, Bloomington, IL 61701	(309)829-6344
	Charlie Moore (CWG)	CEO	210 S. East Street, Bloomington, IL 61701	(309)829-6344
Bloomington-Normal Economic Development Council	Marty Vanags	CEO	200 W. College Avenue, Suite 402, Normal, IL 61761	(309)452-8437 mvanags@bnbiz.org
	Bob Lakin	Chair	200 W. College Avenue, Suite 402, Normal, IL 61761	(309)452-8437
	Jeff Lynch	Vice Chair	200 W. College Avenue, Suite 402, Normal, IL 61761	(309)452-8437
Local and Regional Transportation				
Central Illinois Regional Airport	Carl Olson (CWG)	Executive Director	3201 CIRA Drive, Suite 200, Bloomington IL 61704	(309)663-7384
Bloomington-Normal Public Transit Systems	Andrew Johnson	General Manager	351 Wylie Drive, Normal IL 61761	309-829-1123 ajohnson@bnpts.com
	Judy Buchanan	Chair	351 Wylie Drive, Normal IL 61761	
Dover Trucking Inc.	Keith Knappenburger		607 W. Jefferson Street #1, Bloomington IL 61701	(309)821-1271
Labor Unions				
Bloomington & Normal Trades & Labor Assembly	Ronn Morehead	President	P.O. Box 3396, Bloomington, IL 61702	(309)828-8813
UAW Local 2488 Mitsubishi Motors & Voith Industrial Services	Ralph Timan	President	10226 East 1400 North Road, Bloomington, IL 61705	uaw2488president@a5.com
Teamsters Local 26	Pat Gleason	President	407 E. Lafayette Street, Bloomington, IL 61701	(309)829-9851
North Central Illinois Laborers				(309)829-2545
Great Plains Laborers 362	Tony Penn		PO Box 3248, Bloomington IL 61702	(309)828-4368
Real Estate/Developers				
Bloomington-Normal Association of Realtors	Steve Rader	President	407 Detroit Drive, Bloomington, IL 61704	(309)275-4585
Bloomington-Normal Home Builders Association	Chuck Lansing	President		(309)633-6612 bnahba@comcast.net
Environmental				
Prairie Group Chapter - Sierra Club	Stacy James	Chair	P.O. Box 131, Urbana, IL 61803	
John Wesley Powell Chapter of the National Audubon Society	Rhea Edge	President	P.O. Box 142, Normal, IL 61761	
Ecological Action Center	Kari Sandhaas	President		
	Nancy Armstrong (CWG)	Vice President	310 W. Virginia Ave, Normal IL 61761	(309)454-7040
Friends of Kickapoo Creek	James McManus		P.O. Box 273, Downs IL 61736	(309)454-3169

**East Side Highway EA
Stakeholder Involvement Plan**

GROUP B				
Organization	Contact	Title	Address	Phone/Email
Student Environmental Action Coalition (ISU)	Dr. Angelo Capparella (CWG)			(309)438-5124
GREENetwork (IWU)	Carl Teichman	Co-Chair	203 Holmes Hall 1312 Park Street	(309) 556-3429 cteich@iwu.edu
McLean County Farm Bureau	Scott Hoeft	President	2243 Westgate Drive, Suite 501 Bloomington, IL 61705	(309)663-6497
	Mark Hines (CWG)			(309)275-3738
Illinois Farm Bureau			1701 Towanda Avenue, Bloomington IL 61701	(309)557-2111
Soil & Water Conservation District	Kent Bonhoff (CWG)		402 N. Kays Drive, Normal IL 61761	(309)452-0830 (ext 3)
Major Employers				
Mitsubishi Motors North America	Dan Irvin	Director of Communications & Public Relations	100 N. Mitsubishi Motorway, Normal IL 61761	(309)888-8205
State Farm Insurance Companies	Dave Rasmussen	Director	One State Farm Plaza E12, Bloomington, IL 61710	(309)766-3580
Country Insurance & Financial Services	Jean Lawyer	Director, Corporate Communications	1701 N. Towanda Avenue, P.O. Box 2020, Bloomington, IL 61702	
Advocate BroMenn Medical Center	Colleen Kannaday	President	P.O. Box 2850, Bloomington, IL 61704	
OSF St. Joseph Medical Center	Christy McFarland	Marketing Specialist	2200 E. Washington Street, Bloomington IL 61701	(309)665-5746
Public Schools				
McLean County Unit District 5 Board	Meta Mickens-Baker	President, Board of Directors	3314 Stonebridge Drive, Bloomington, IL 61704	
	Dr. Gary Niehaus (CWG)	Superintendent	3314 Stonebridge Drive, Bloomington, IL 61704	(309)557-4040
Bloomington Public School District 87	Millicent Roth	President, Board of Directors	300 E. Monroe Street, Bloomington, IL 61701	
	Dr. Barry Reilly	Superintendent	300 E. Monroe Street, Bloomington, IL 61701	(309)827-6031
Tri-Valley Community District 3	Jay Chrisman	President, Board of Directors	410 E. Washington Street, Downs, IL 61736	
	Curt Simonson (CWG)	Superintendent	410 E. Washington Street, Downs, IL 61736	(309)378-2351
Private Schools				
Cornerstone Christian Academy	Becky Shamess	Head of School	P.O. Box 1608, Bloomington, IL 61702	(309)662-9900
Midwest Christian Academy	John & Jan Walsh		2905 Gill Street, Bloomington, IL 61704	(309)663-4477
Bloomington Central Catholic High School	Joy Allen	Principal	1201 Airport Road, Bloomington IL 61704	(309)661-7000
Higher Education				
Illinois State University	Dr. Al Bowman	President	421 Hovey Hall Campus Box 1000 Normal, IL 61790	(309)438-5677
Illinois Wesleyan University	Dr. Richard F. Wilson	President	1312 Park Street, Bloomington, IL 61701	(309)556-3151 president@iwu.edu

**East Side Highway EA
Stakeholder Involvement Plan**

GROUP B				
Organization	Contact	Title	Address	Phone/Email
Heartland Community College	Dr. Allen Goben	President		(309)268-8100 Allen.goben@heartland.edu
Emergency Services/Hospital				
McLean County Sheriff	Rusty Thomas (CWG)	Chief Deputy	104 W. Front Street, Bloomington IL 61701	(309)888-5034
City of Bloomington Fire Department	Mike Kimmerling	Fire Chief		(309)434-2627
City of Bloomington Police Department	Randall McKinley	Chief	305 S. East Street, Bloomington IL 61701	(309)434-2355 police@cityblm.org
	Robert Wall (CWG)	Assistant Chief	109 E. Olive Street. PO Box 3157 Bloomington IL 61702	(309)434-2700
Town of Normal Fire Department	Mick Humer	Fire Chief	1300 E. College Avenue, Normal, IL	(309)454-9689
Town of Normal Police Department	Rick Bleichner	Chief	100 E. Phoenix Avenue, Normal , IL 61761	(309)454-9535 rbleichner@normal.org
Towanda Fire Department	Mike Donald	Fire Chief	203 W. Jackson Street, Towanda, IL	(309)728-2121
Downs Community Fire Protection District			102 W. Main Street, Downs, IL 61736	(309)378-2021
McLean County Area EMS			705 North East Street, Bloomington, IL 61701	(309)827-4348
McLean County EMA	Curtis Hawk	Director	104 W. Front Street, Basement Room 10, Bloomington, IL 61701	(309)888-5020
OSF St. Joseph Hospital	Kenneth J. Matzke	President and CEO	2200 E. Washington Street, Bloomington, IL 61701	(309)662-3311
Utilities				
Ameren	Leigh Morris	Illinois Communications	501 E. Lafayette Street, Bloomington, IL 61701	(217)535-5228
Corn Belt Energy	Keith Erickson	Manager of Engineering Services	One Energy Way, Bloomington, IL 61705	(309)662-5330
	Tim Mullenberg (CWG)	Vice President of Electric Distribution	One Energy Way, PO Box 816, Bloomington IL 61702	(309)662-5330
NICOR Gas	Bernie Anderson (CWG)	Senior Regional Communications Director	1305 Martin Luther King Drive, Bloomington, IL 61701	(309)261-4145
Frontier Communications	Patricia Amendola	Manager Communications	Frontier Central Region, 14450 Burnhaven Drive, Burnsville MN 55306	patricia.amendola@ftr.com
Gridley Telephone Company			108 E. 3rd Street, Gridley, IL 61704	(309)747-2221
Bloomington-Normal Water Reclamation District	Don Merritt	Board Member		(309) 665-0826

**East Side Highway EA
Stakeholder Involvement Plan**

GROUP C				
Organization	Contact	Title	Address	Phone
Civic Organizations and Clubs				
Kiwanis Club of Bloomington	Leann Seal (Tricia Shaw)	(President)	c/o Secretary, P.O. Box 1866, Bloomington IL 61702	(309)275-1181
Kiwanis Club of Normal	Matt Lauritzen	President		(309)662-0411
District I-K Bloomington Lions Club	1 st Vice President	Jewel Schalk	P.O. Box 5045, Bloomington IL 61702	(309)452-1800
District I-K Normal Lions Club	Robert Harshbarger	President		(309)452-4250
Knights of Columbus	John Braucht	Club Manager	1706 R T Dunn Drive, Bloomington IL 61701	(309)828-9671
Sunset Rotary	Doug McCarty	Vice President		(309)438-2083
VFW Club			1006 E. Lincoln Street, Bloomington IL 61701	(309)829-1522
AASR Masons	David Young		302 E. Jefferson Street, Bloomington IL	(309)828-6077
American Business Women's Association Heartland Chapter	Jackie White			(309)662-3976
American Legion – Louis E Davis Post 56, Office			501 N. Main Street, Bloomington IL 61704	(309)828-3641
Illinois Society of Professional Engineers				
Illinois Corn Growers Association	Rodney Weinzierl	Executive Director	P.O. Box 487 Bloomington IL 61702	(309)827-3257

GROUP D				
Organization	Contact	Title	Address	Phone
Media				
Pantagraph	Mary Ann Ford		310 W. Washington Street, P.O. Box 2907, Bloomington, IL 61702	(309)747-7323
Normalite			1702 W. College Avenue, Suite G, Normal, IL 61761	(309)454-5476
The Argus (Illinois Wesleyan University)	Jackie Connelly	Editor-In-Chief	P.O. Box 2900, Bloomington, IL 61702	(309)566-3117
The Daily Vidette (Illinois State University)	Rick Jones	General Manager		(309)438-2883
Spectator (Heartland Community College)	Susan Salazar			(309)268-8620
WJBC 1230 AM			236 Greenwood Avenue, Bloomington IL 61704	
WSPL 1250 AM			Highway 23 North, Streator, IL 61364	(815)673-1833
WGLT (radio ISU PBS)	Bruce Bergethon	General Manager	Campus Box 8910, Illinois State University, Normal IL 61790	(309)438-2393